



Wilstead NEWSLETTER

including Parish Council News

September 2025

PUBLISHED BY WILSTEAD NEIGHBOURHOOD WATCH, PART OF BEDFORD & DISTRICT NW ASSOCIATION

Wilstead Village Hall

Recently we have had a few hirers who have not adhered to the Hirers' Terms and Conditions of the Hall and have had some damage to the hall and unnecessary disturbance to the local residents. Therefore, we are introducing that from now on, any adult and teenage parties that go beyond 8.00pm, will not only have to pay the £100 deposit but also a £400 security deposit against any damage and disturbance in the locality. If a hirer follows the rules, then the deposits will be returned. We are also looking into the hirer having to pay for security guards if we think it necessary. It is a great shame that the minority spoil things for the majority!

As not one volunteer came forward following the last appeal, we again ask if you are good at/enjoy DIY and are happy to give some of your time to support Ben the caretaker and the Committee with small jobs in the Village Hall as and when needed? Also, do you enjoy gardening and have some spare time to help in the Village Hall garden as it continually needs attention with weeding etc? If so, please contact Barbara or Angela. Some jobs don't need the expense of a professional and an hour every so often would be greatly appreciated. Thank you in advance.

We still need new faces on the Committee with fresh ideas about how to run the Hall. Many of the present committee will probably retire next year, so now is a good time to join us and learn

how the hall works. No Committee next year means NO hall for local people to use!

Don't forget that to find any information about the hall, T's & C's, rates of hire, hall availability and to make a booking via the On-line Diary etc., please visit: wilsteadvillagehall.co.uk.

We would greatly appreciate potential hirers using the online booking system and NOT emailing the Admin team.

Chairperson | Barbara Seamark
seamarkbarbara@gmail.com 07709573475

Secretary | Angela Fosbrook
fosbrookangela@gmail.com 01234 294692

Readers Letter

Dear Wilstead Allotment workers

I have old greenhouse 3-4mm glass to give away if they could be useful to anyone. The aluminium has been taken, just the glass left. I believe the door is still complete, with the aluminium frame. The interested person will need to collect the glass.

If interested, please phone
01234 767561 [In Wootton].

(Name supplied)

Contents this month include:

Bowls Club	Page 3
Pre School News	Page 6
Wilstead Players News	Page 7
Good Neighbours	Page 9
Garden Club.....	Page 16

Your Co-ordinator is:

Suspicious Emails

As of April 2025, the total number of phishing scams reported to the Suspicious Email Reporting Service (SERS) reached over 41 million since its launch in April 2020. This has resulted in 217,000 scams being removed from across 393,395 websites pages by the National Cyber Security Centre.

Insight revealed by Action Fraud shows the top industries impersonated in reported phishing emails were streaming services, tech and telecommunication companies, with some posing as various UK government schemes.

Action Fraud, the national fraud and cyber crime reporting service, launched a phishing awareness campaign to urge the public to beware of phishing scams and report all emails and messages if they look suspicious.

Spam calls and suspicious text messages can be reported too. By using 7726, a free service offered by mobile network providers, customers can forward suspicious text messages, which helps the removal of scam websites and allows networks to block users sending scam text messages. Between April 2020 and April 2025, more than 27,000 scams were removed as a result of being reported using 7726.

Keep Safe When You're Collecting Purchased Goods

#TogetherforBedfordshire

What precautions do you take if you're picking up an item you're buying online?

We've had a couple of reports recently of incidents in which people were robbed as they went to collect items.

If you've got concerns about sharing your home address you might want to suggest meeting in a public place. If you can, invite a friend or family member to accompany you.

If that's not possible inform a trusted person about the time and location of the meeting.

More generally, it's sensible not to have valuable jewellery or expensive phones on open display.

While you are out, be aware of your surroundings, try not to use your phone. It's easy to get distracted.

Remember if you ever feel unsafe or face immediate danger call us on 999.

And if you see or hear anything suspicious you can always report it online here:

www.beds.police.uk/tua/tell-us-about/soh/seen-or-heard/



**Your Local Approved
Alarm Company**



A family business established for 30 years in the area. Systems designed and installed to PD6662:2010 and BS8243:2010. Insurance company recognised.

Key clients include...
Bedfordshire Police
Central Bedfordshire Council
Bedford Borough Council
Bedfordshire Schools

**INTRUDER ALARMS, ACCESS CONTROL, CCTV,
SAFES, DOOR & WINDOW LOCKS, KEY CUTTING**

**HERTS – BEDS – BUCKS
01462 422500**

www.southeastsecurity.co.uk

**UNIT 6, STATION APPROACH
HITCHIN, HERTS, SG4 9UW**





Wilstead Bowls Club

The Presidents Day spoon drive in aid of Cancer Research was held on Sunday 3rd August.

Our President would like to go on record and thank all the members who turned out to play, donating their time and money to a great cause. Also thanked are members who donated so many prizes for the raffle. It was a wonderful day; the weather was brilliant and all the players had a good time. The day raised £441 for the charity.

A Fish and Chip spoon drive was held on Friday evening 23rd August, a fun evening with lots of banter.

Very few matches were rained off this year, some matches were played in weather sometimes hotter than players would have liked, which meant some games were shortened.

During this the 40th anniversary year, thanks go out to all of those who have given their time to support the club: especially those maintaining the green, those providing the catering and those manning the bar.

The outdoor season has gone so quickly with only a few fixtures left to play. Six of our ladies were runners up in the Tuesday League Knockout Competition. In the 2 rink county league our men earning promotion to division 1 next season.

The various rounds of the club competitions have taken place and the in-house finals are being played the weekend of **13th and 14th September**, with various matches over the 2 days. Spectators are always welcome, come along and join us.

Short mat indoor bowling will start up again on Tuesday, Wednesday afternoons and Friday evening from mid-September.

On a sadder note, David Potter passed away on Friday 15th August. David was an early member of Wilstead Bowls Club. He had been Bar Chairman, Chairman and latterly a Trustee. He was County President in 2004 and also played for Bedfordshire and Bowls England.

If you need any club information you can contact:

Sue Marchant
Club Secretary 07716 676383
sue@marchantonline.com
www.wilsteadbowlsclub.co.uk



*Bad Hair Day?
Lets make it a Good Hair Day*

GAYE WILLIAMSON

30 yrs Experience, Home Based Local Salon

For All Your Hairdressing and Barbering Needs

Offering the Latest Colours and Styling,

Using Professional and Exclusive Products

Redken and Brazilian Blowout Smoothing System to name but a few

New Clients Welcome.

to book an appointment call me on

07899 864510

please note that a skin test and hair consultation is required before a treatment

FENCING & LANDSCAPING

SUPPLIED • INSTALLED • REPAIRED

Please see website for details:

www.useful-bloke.co.uk

Mark Brooks | Office: 01234 958064
Mobile: 07836 597938

Whitworth Way, Wilstead, Bedford.



**70 YEARS' EXPERIENCE
OF SUPERIOR
FLOORING SERVICE**

- EXCELLENCE
- QUALITY
- SPECIALIST KNOWLEDGE

An impressive range of traditional and contemporary floors for all budgets.

Engineered Wood (herringbone, parquet), Laminate, Carpets, Stair Runners, Vinyl, Luxury Vinyl Tiles (Amtico, Kahrs)

**ALL TYPES OF FLOORING
IN THE HEART OF SILSOE**

duolagi



Visit our tranquil showroom

01727 844408 silsoe@123floor.co.uk

Mansion House, Wrest Park, Silsoe MK45 4HR

Monday-Thursday 8.30am-5.30pm - Other days by appointment

123floor covers Beds and Herts with thousands more samples in our St Albans showroom.

WWW.BEDSFLOORS.CO.UK • WWW.123FLOOR.CO.UK

NAO Cleaning

07411 136691

naoservices111@gmail.com

Hate housework? We love it!

Domestic, Regular & Spring Cleans, Tenancy Beginning & End, Builder's Cleans, Commercial & Contract.

Free Estimates

Bramble Lodge, 29 Oakley Road, Clapham, MK41 6AN
www.naocleaningservices.co.uk



Wilstead Pre School

Every Child Deserves The Best Start in Life

A warm, welcoming setting with lots of learning opportunities, and fantastic outdoor area

Morning session: 9.15am - 11.45am | Afternoon session: 12.45pm - 3.15pm
Also providing, breakfast, lunch and after school clubs

01234 742546

admin@wilstead-preschool.co.uk

Ofsted Good Provider

Starting age is 2½ years old. Demand for places is high, therefore it is advisable to register your child as soon as possible.

a member of early years alliance

Washing Machines Dryers, Dishwashers Repairs, Servicing & Sales

A local family business offering a quality service at a competitive price
Established 1981



Tel: Clophill (01525) 860148
or Tim Downing direct on
07969 545 276

A Member of the White Goods Trade Association. Fully Insured



Select Travel Holidays

Home of Cruise Select
24A Mill Street, Bedford

Big ship, little ship, river or ocean • Safari or city break • Bucketlist destinations and bespoke holidays - and beyond...

We can make your dream holiday a reality -

Book local with us, and travel the world!

Why book your holiday with us?

- Local, with a shop in Bedford
- Multiple decades of experience and knowledge in the travel industry
- Award-winning
- We can book many household brands at no extra cost, or tailor your holiday just for you
- Impartial advice and personalised service from enquiry through to return home!

Contact us today for your next holiday enquiry, or to find out about our local events on inspiring travel:

01234 326 758 | sales@selecttravelholidays.co.uk
www.selecttravelholidays.co.uk

Wilstead P3 Footpath Group Meetings

The latest meeting of the Group was held in the Village Hall at the beginning of August. Members of the Group reported on the condition of all of the Public Footpaths and Public Bridleways in the Parish (seventeen in total). These reports recorded ease of use and highlighted any problems which were impacting on this.

There were no real problems and all of these Rights of Way were walkable and in the case of the Bridleways these were also usable by horse riders and cyclists.

These paths provide off-road links for non motorised transport within the village as well as links to surrounding villages eg Haynes, Cotton End, Elstow and Houghton Conquest.

If you do come across any problems with vegetation obstructing any path, or with any path furniture (e.g. waymark posts, kissing gates), or uncertainty as to where to go, please report this via the phone number at the end of this input to the Newsletter and the Group will look to fix it.

The next meetings of the Group are on **Saturday 4th October** and **Saturday 29th November** at 10.00am in the small hall of the Village Hall.

Come along to the meeting if you would like to get involved with monitoring the state of the paths in the village and / or helping to fix any problems. All are welcome.

Working Parties

Again with the continuing fine dry weather, as reported above, there have been few, if any, path problems identified, following the Group's monthly inspections or, by members of the public, with the 11 miles Footpaths and Bridleways around the village and so no remedial work was proposed.

As and when problems are identified the Group will look to rectify these and if they are too big / complicated for the group to resolve then the Bedford Borough Rights of Way department will be asked to undertake any work required to fix the problem.

Walks

The 15th August four and a half mile walk in the countryside between Maulden, Ampthill and Houghton Conquest was postponed a week to the 22nd August because of the high temperatures, (makes a change from rain!!). This re-arranged wander coincided with the editorial deadline of the Newsletter so hopefully it went ahead and a report on this walk will be in the next Newsletter.

The remaining walks this year are currently planned for **Sunday 14th September 2.00pm**, **Sunday 19th October 10.30am** and **Sunday 23rd November 10.30am**.

Sometimes life and the weather have a way of disrupting any plans so keep an eye on the posters on the village noticeboards for details of these future walks and any changes.

Come along if you fancy a wander (4-5 miles through the nearby Bedfordshire countryside).

Lastly it is intended to continue the twenty year plus tradition of having a New Year's Day morning wander around the village footpaths and bridleways, (ideal for addressing any over indulgence the night before!). Again keep an eye on the village noticeboards and future Newsletters for details nearer the time.

Nigel Jacobs

Wilstead Footpath Group
01234 400733

Maulden Art Group EXHIBITION & SALE

Sunday 19th October

11am - 4pm

Maulden Village Hall

FREE ADMISSION

Children's Activities

Refreshments

Working Artists

**EDENVUE**
Social Care Ltd

WHERE CARE AND COMPASSION
CREATE A BETTER TOMORROW

We are a small family run health and social care provider with over 20 years experience in the care sector. We provide professional person-centred care for older people, anyone with physical and/or learning disabilities, and those who require support after surgery or during illness in the comfort of their own home.

We are based in Bedford and offer our services right here in Wilstead.

OUR SERVICES INCLUDE

- 24 hour live in care
- Supported living
- Palliative care
- Domiciliary care
- Dementia care
- Community engagement
- Companionship
- Errands and shopping
- Post surgery support
- Meal preparation
- Medication support
- Personal care
- Household chores
- Light cleaning and laundry
- Admin and basic IT support
- Transport
- Days out

"We are understand how important caring for you or your loved one can be and how daunting it may seem, that's why we always ensure you have the same person looking after you, for continuity of care and peace of mind".

Joylene, Register Manager

CONTACT US TODAY

T: 07464 687 056
E: admin@edenvuesocialcare.co.uk
W: www.edenvuesocialcare.co.uk

Regulated by


**CODE:
JC02WN1**

£20
Off Your 1st Repair
at Just Computers



justcomputers
**Celebrating
15 Years
Of Business**

7 High Street, Kempston,
Bedford, MK42 7BT
www.justcomputersonline.co.uk

01234 300007

**EMPIRE CARS
BEDFORD**

MOTS NOW ON SITE
SAVE WHEN BOOKED WITH FULL SERVICE
FREE PICK UP/DROP OFF
SERVICING & REPAIRS
QUALITY USED CAR SALES
0% DEPOSIT FINANCE AVAILABLE

1 COTTON END ROAD, WILSTEAD, MK45 3BT
01234 741002 OR 07727 258633
WWW.EMPIRECARSBEDFORD.CO.UK

BLISS
Plumbing & Heating


Where plumbing is Bliss

07805 540432
www.blissplumbing.co.uk
info@blissplumbing.co.uk



Caroline's Childcare



"This is a
good childminder"
Ofsted 2015

*A Safe & Friendly Environment
Caring for Individual Needs*

Qualified with NVQ 2 & 3 in Early Years in Education
CACHE Level 3 Diploma in Home Based Childcare
Ofsted Registered Childminder
Registered to PACEY

Now offering Free Government Funded
Places for 2, 3 & 4 year olds

01234 742770

carolinebsexton@yahoo.co.uk



Wilstead Pre School

Welcome back! After the long summer break we are back fully raring to go.

Before we get going I would like to thank all our lovely parents for their wonderful gifts/ cards and kind words (and chocolate) at the end of last term.

It truly means so much to have such wonderful support from everyone. Thank you!

At the end of last term we had to say a sad goodbye to our school leaving children. We wish them all the best for starting their new primary schools. I know the parents will be more nervous than their children when they start, but rest assured, they will all be fantastic!

Staff news. At the end of last term we said a very sad goodbye to Laura and Jamilee. The lovely Jamilee has been on maternity leave with her beautiful daughter Rosie and is going to be spending more time with her growing family. We wish you all the best Jamilee and keep bringing Rosie in to see us! You will be missed by everyone.

The lovely Laura is embarking on an exciting new career as a primary reception teacher. Laura has worked at pre school for the past 9 years and has been a HUGE part of pre school, she will be greatly missed by staff, children and parents. Good luck Laura in your new adventure.

Right - September is here and we are very much looking forward to welcoming our new children and their families over the next few weeks. Our main priority will be settling the children in and getting to know their little personalities.

Rest assured they will be very well looked after and will settle very quickly. We look forward to welcoming you all.

We also are really looking forward to seeing how much our returning children have grown over the summer holidays! Welcome back children!

Fundraising news

We will have our annual AGM in October to welcome new parents to our committee (date to be announced).

**Jonathan's
Interior Decorating
Services**
Painting, Wallpapering, Tiling

Est 1999

Fully insured and
references available.

Please call
07968 659877 or
01234 417785
to arrange a quote.




**CATCH
DRIVINGSCHOOL**

07547 990332 info@catchdriving.co.uk

YOUR LOCAL DRIVING INSTRUCTOR

- ROB CATCHPOLE
- FULLY QUALIFIED DRIVING INSTRUCTOR
- COVERING THE BEDFORDSHIRE AREA
- LESSONS IN A MANUAL CAR
- FLEXIBLE LESSON HOURS/BLOCK LESSONS



**Darmody
PLUMBING & HEATING SERVICES**

James Darmody
Your Local Plumber

01234 965769
07832 236678
darmodyplumbing.co.uk

- Oil boiler specialist
- Breakdown and servicing
- Oil boiler installations
- Heat pump installations
- All heating aspects
- Plumbing and full bathroom installation
- Emergency call outs



If you are interested in joining the committee please speak to a staff member.

We are a charity run pre school which is run by a committee of parents.

It is vital we have more members join and keep our pre school up and running.

The committee members will help at our fundraising events too. There is no pressure as you can do as much or as little as you can.

We need you! It's a great way of getting to know the staff better and how pre school works, and maybe make a new friend or two.

We will be organising a quiz night, possibly a Halloween disco and our Christmas bazaar which this year will be on Saturday 6th December at the village hall. Put it in your diary.

More details to follow in the next newsletter. Thankyou.

I hope you all had a wonderful summer and we look forward to seeing you all.

Julia.

Wilstead Players News

The former Wilstead Players will be holding an Extraordinary General Meeting in the Small Hall at Wilstead Village Hall, in Cotton End Road, Wilstead on Wednesday, the **17th September 2025** at 7.30pm. The Meeting has been called to formally dissolve Wilstead Players and to decide on the disposal of assets.

It has been suggested that a new social organisation be formed under the name of The Friends of the Players, and of course a Chairman, Secretary and Treasurer will need to be appointed to proceed.

If this is how you see the future of the former Players, please make an effort to attend the Meeting - thank you.

Age UK Bedfordshire

is the largest older peoples' charity in the County

We have been helping older people for over 30 years with confidential advice and support. We work with Bedfordshire residents over the age of 50, their families, friends and carers, focusing on the individual client to ensuring their needs and wishes are prioritised.

We can provide:

- Practical assistance around the home and garden through our home help and gardening service.
- Information and Advice on Benefit Entitlement, Health and Housing issues, Personal Budgets, Legal Matters and virtually any other matter relating to older people.
- Home visits to help complete benefit application forms for people who are unable to visit our office.
- Community Support Workers who will work long term with clients who have more complex needs.

- In depth advice and support for vulnerable older people who otherwise would suffer from living in cold homes.

- Telephone Befriending Network supported by the Harpur Trust in Bedford Borough.

Our services are delivered in a caring, friendly and professional manner, through our team of fully trained, dedicated staff and volunteers.

If you or anyone you know would like more information, please contact us on the number below or visit our website www.ageukbedfordshire.org.uk

Remember, we are a County wide service!

01234 360510

Age UK Bedfordshire – the name you can trust!



PILATES & CHAIR PILATES

with K FIT at Wilstead Village Hall

PILATES	CHAIR PILATES	PILATES
Tuesdays	Tuesdays	Fridays
9.30~10.30am	10.45~11.30am	9.30~10.30am

Join our award winning company for our Pilates sessions, where we focus on posture, strength, mobility and core stability. Our classes are mixed ability, beginners are welcome.

For more information or to book, please contact Katrina at kdanceandfitness@gmail.com, or phone 07967 100603.



Dixon & Sons

CONSTRUCTION LIMITED

Call for an estimate:

- 07712 121 493
- 01234 840879

enquiries@dixonandsons.co.uk

www.dixonandsons.co.uk

- New Builds
- Extensions
- Landscaping
- Driveways
- Groundwork and Brickwork Contracts
- Garage Conversions and Alterations
- Chimney Repointing and Repairs



We take great pride in maintaining a reliable and friendly service.









Call today for a non-obligatory estimate.
References are available on request.
Company Registration Number: 09025667

Start your adventure today





VW Campervan Hire

Based in Wilstead

Spring Promo Code 10% OFF: W110

www.hireacampervannow.co.uk

07974 778559

All Saints Church

United in Faith. Welcoming All

The services have been planned for **SEPTEMBER** as follows:

Sunday 7th September | 11.00am
MORNING PRAISE | Mr Robert Heley

Sunday 14th September | 11.00am
HOLY COMMUNION | Rev Mike Stewart

Sunday 21st September | 11.00am
MORNING PRAISE | Helen Harbron-Applegarth

Sunday 28th September | 11.00am
HOLY COMMUNION | Fr Paul Messam

The service on **28th September** is our Harvest Festival Service to be followed by a Bring and Share Lunch in the Chapter House. There will be lists in church for people to offer what they can bring.

All are welcome to the services with refreshments afterwards.

The July Coffee Morning was very successful. We were welcomed to Jackie and David Lloyd's house and we thank them for their hospitality.

The September Coffee Morning is planned for **Wednesday 17th September** at 10.30am in the Chapter House and there will be Coffee Mornings on **Wednesday 15th October** and **Wednesday 19th November** also at 10.30am in the Chapter House.

Robert Heley

LOCAL LOCKSMITH

07860482994

SPECIALIST IN UPVC & COMPOSITE DOORS

SAFES - LOCKS - HANDLES
ANTI SNAP CYLINDERS - WINDOWS
REALIGNMENT & SERVICE

FREE SURVEY AND QUOTE
☎ 01234 262625

WEBSITE - WWW.GEMINILOCKANDSAFE.CO.UK
EMAIL - INFO@GEMINILOCKANDSAFE.CO.UK

GEMINI
LOCK & SAFE



APPROVED COMPANY
LICENSE NO: 001662



Graham East

Double Glazing Repairs
Offering a fast, efficient and highly competitive service.

MISTY GLASS UNITS REPLACED

All aspects of double glazing repair work undertaken:

HANDLES✓ **LOCKS**✓ **PANELS**✓ **HINGES**✓

CYLINDERS✓ **GASKET/SEAL REPLACEMENTS**✓

Call Graham for a **FREE** quotation on:
07764 726824



WILSTEAD & WIXAMS

September Update

I would like to add some extra thanks to the volunteers who keep the Cafe going, both here in Wilstead and also in Wixams. The cafe would not function without them. So if you, the villagers, want this to continue please consider giving up some time once every two to three months and help us keep it going. If we don't get more helpers it will soon have to close! Also if the number of visitors does not increase we will have to consider its future as it costs us to keep it going, so please, turn up! Those that do seem to enjoy themselves.

Once again, though not a Good Neighbours function I would like to bring to your attention a RBL event we are organising (I am Wilstead Branch Vice Chairman). A race night on **Saturday 20th September** to raise funds for the Branch and poppy appeal, Bowls Club, 7:30 start. Look out for posters with details, or contact me directly.

Next Wilstead Cafe dates in the village hall are **Fridays, 5th September, 19th September, 3rd October and 17th October** at the normal times 2.00 to 3:30pm. And don't forget Wixams, Lakeview Village hall every Tuesday 10:30 to 12 Noon. **ALL AGES WELCOME - KIDS AS WELL !**

Rick Baxter

Chairman | 01234 740854

WWGNS Phone 07807 408928

**Mobile Sports and Holistic
Massage Therapist**

In the comfort of your own home

New Align

Swedish Massage • Deep Tissue Massage
Indian Head Massage • Pregnancy Massage
Hot Stone Massage • Manual Lymphatic Drainage

LUCY | 07957 644232

Treatments of 30 mins • 45 mins • 1 hour
Fully qualified and insured | Prices start from just £30



DO YOUR FEET NEED SOME TLC?

Then give us a call...

Foothealth Professionals

Julie Boscher 01234 740866

Hannah Cooke 07940 738107

elitefeetfoothealth@gmail.com

Specialising in **Corns, Verrucas,
Hard Skin, Bunions, Nails, etc.**

WILSTEAD VILLAGE HALL

Available for hire during the day and evenings for **CHILDREN'S PARTIES, FAMILY GATHERINGS, TEA PARTIES and CLUB MEETINGS, etc.**

For information about the hall, rates of hire, T&Cs of hire, to check availability and to make a booking request via the diary page, go to:

wilsteadvillagehall.co.uk

Any issues or questions, please contact:
bookings.wilsteadvh@gmail.com

Looking for Independent Mortgage Advice?



BHM Mortgages are independent mortgage brokers dedicated to giving a friendly and professional service.

Get in touch to arrange a free mortgage review

01234 380421 or 07541 842102

peter@bhmmortgages.co.uk

Burton Harvey Mortgage Services Ltd is authorised and regulated by the Financial Conduct Authority, Registration number 811767

For all your Printing requirements ...

- * Stationery
- * Flyers / Leaflets
- * Business Cards
- * Brochures
- * Booklets
- * Posters
- * Plans / Drawings
- * Stickers / Labels
- * Vinyl Banners
- * Roller Banners
- * Foamex / Correx Signs
- * Embroidery
- * Orders of Service
- * Wedding Stationery



01234 270465

✉ **info@whitehartpress.co.uk**

www.whitehartpress.co.uk



Wilstead & Wixams



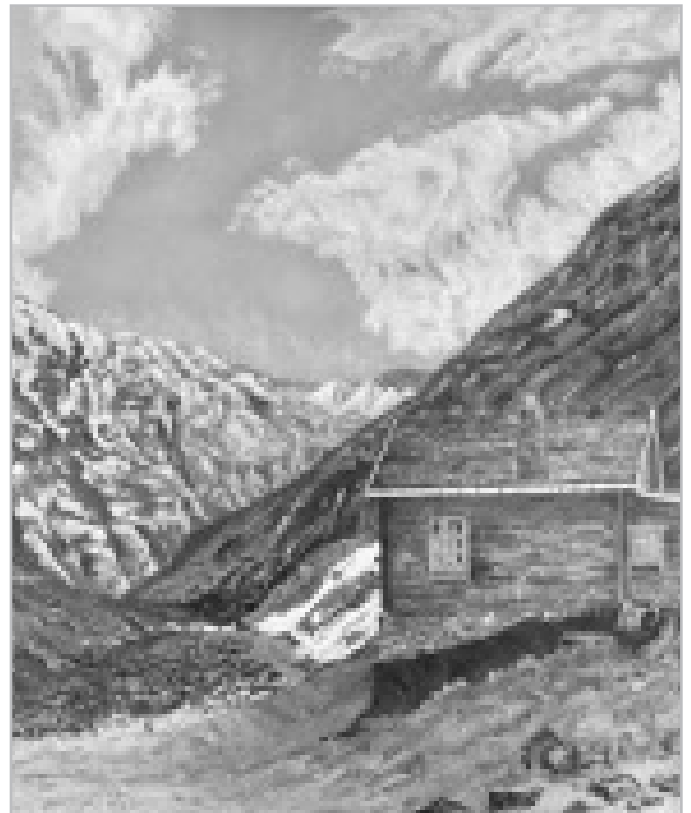
COMMUNITY
ART GROUP

If you're interested in art and would love to try out your talent, why not join us?

Your first session is free and, if you decide to continue and become a member, it will be £3 a session when you're able to come. We meet in the Village Hall on Mondays from 2pm-4pm. We don't meet on Bank Holidays. Our group

has members of all abilities, using a variety of mediums. You might like sketching in pencil, charcoal, pen and ink, or painting by numbers. You can also paint in watercolour, acrylic or even oil.

Meeting in the large hall makes it a safe space to work in and we are well spaced out. May I remind members and new people that we do have a small variety of art resources for your use so, if there is anything you haven't got or would like to experiment with, we may be able to help. If you need it, several of our members will help and encourage you in whatever your artistic endeavours happen to be.



Alpine view by Andrew

Enquiries: **Michael Bradley**
07526 939164
revmichael14@outlook.com



WILSTEAD SKIP & GRAB SERVICE

A local, independent skip hire company committed to providing reliable, affordable services across Bedfordshire.



Same or next-day
skip hire



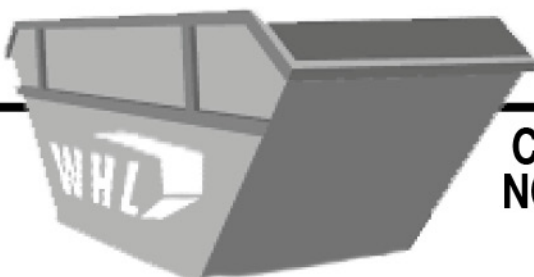
Skips from £100
various sizes
available



Supply of
aggregates,
including topsoil



Over 90% of waste
recycled at our
licensed Waste
Transfer Station



You have tried the rest now try the best!

CALL US
NOW ON: **01234 740916**

(Discount offered for local villages)

News from the Pews

Our Pet Blessing Service of 10th August was a great success. The sun shone brilliantly and we had an enthusiastic congregation seated outside the church. The dogs and tortoises seemed to enjoy the occasion as much as their owners. After a rousing chorus of "All Things Bright and Beautiful", the gathered animals were blessed by Revd. Mike, Helen led a prayer for pet owners everywhere, then it was time for a much-welcomed tea, with cake, in the shade. Owners were presented with a certificate for each of their pets. Our retiring collecting raised £30 for the National Animal Welfare Trust (Bedfordshire). Thank you to everyone who took part.

In September we will be starting a monthly afternoon meeting in HeBrews Cafe in church. After our usual hot drinks and cake, we will be having short, gentle conversations about what our Christian faith means to us and exploring ways in which we can develop and share this with others.

If this sounds like something you would like to discover for yourself, and you need not be a member of our church to join us, you are warmly invited to come along. Our first meeting of "READY TO SHARE" will be Tuesday 9th September beginning at 2pm, closing at 3pm. Please contact the Team Ministry below if you would like any further information.

We have successfully twinned our church toilet with a Tearfund toilet in South Sudan. Thank you to everyone who contributed to "A Penny for the Loo". We are almost ready to make a second toilet twin.

If you would like an Elstow Team minister to visit you at home, or you would like to plan a baptism, confirmation, wedding; or have advice about funeral arrangements; if you would like to receive Home Communion, please contact us at the address below.

Many Blessings

Helen Harbron-Applegarth
Lay Minister | Elstow Team
Elstow Team Ministry
01234 261477
vicar@elstow-abbey.org.uk

W&H PEACOCK
AUCTIONEERS & VALUERS

01234 266 366
peacockauction.co.uk

Auction Sales & Valuations
Valuation, collection and auction service of individual items through to complete property and commercial clearance.
Call for a no obligation quote or info@peacockauction.co.uk
SALE ENTRIES NOW INVITED


Eastcotts Park,
Wallis Way,
Bedford, MK42 0PE



Bedford Cleans
Offering 1 hour cleans in Wixams & Wilstead

✓ ONE TIME
✓ WEEKLY
✓ BI-WEEKLY
✓ MONTHLY

SERVICES OFFERED:
Kitchen • Bathrooms
Dusting • Mopping
Vacuuming & more!

Contact Natalie
07985 427840



DARREN'S HANDYMAN SERVICE
Carpentry | Painting | Plumbing
Flatpack Assembly & General Repairs
Reliable Property Maintenance
NO JOB TOO SMALL!
For a friendly and reliable service call Darren for a free quote today:
01234 930608 / 07719 556195



Dixon & Sons
PLUMBING & HEATING

Call for an estimate:
• 07712 121 493
• 01234 840879
• plumbingandheating@dixonandsons.co.uk
• www.dixonandsons.co.uk

- Boiler Installation
- Bathroom Design and Installation
- Break downs, Repairs and Maintenance
- Underfloor Heating
- Standard Boiler Services



We take great pride in maintaining a reliable and friendly service.

NVQ City & Guilds

Call today for a non-obligatory estimate.
References are available on request.
Company Registration Number: 09025667



Wildlife Trust for **Beds, Cambs & Northants**

Flit Vale Local Group | Wildlife Walks & Talks | February & March

Friday 12th September, Flitwick Moor (TL045354). Meet at 7.00pm. **Bat Walk** at Flitwick Moor with Aidan Matthews, BCN's Senior Reserves Manager (Bedfordshire)

Flitwick Moor is an excellent area for bats and we hope to see and identify several species. The wider rides provide good hunting for Pipistrelles. If you have a bat detector, please bring it along. A torch is essential and insect repellent is a good idea at this time of year! Charge: £4.00 per person

Sunday 28th September, Flitwick Moor (TL045354). Meet at 10.00am. **Fungal Foray** at Flitwick Moor, a joint event with Herts & Beds Fungi Group

Hoping for a mix of damp and mild weather to guarantee a good showing of mushrooms and toadstools. Experts will help you identify your findings and tell you more about the wonderful and sometimes weird world of fungi. Free, but donations welcome

Saturday 25th October, Nene Wetlands visitor centre (NN10 6FH), Meet at 10.00am.

Walk around the beaver enclosure with leader Lara Jones, SPA Engagement Officer

Find out what our furry friends have been up to since their arrival in February. In this daytime walk, we will spend some time looking at their habitat, learning about their management and hopefully spot some signs of their work. Beavers are nocturnal creatures, so we are unlikely to spot them on this walk, but we will spend some time at the Nene Wetlands Visitor centre where we can watch plenty of trail camera footage of their antics on the screens.

Free car parking is available at Rushden Lakes for 5 hours maximum. Charge: £4.00 per person

Booking for outdoor and online Flit Vale events is essential, as places are limited.

Please contact Ann by email flitvale.info@gmail.com or phone (leave a message or text if you prefer) 075801 78889 to reserve your place.

The Wildlife Trust for Bedfordshire, Cambridgeshire, and Northamptonshire

Registered charity number: 1000412 | www.wildlifebcn.org

Flit Vale Local Group www.flitvale.org.uk



SINEWAY SERVICES LTD

- *Plumbing & Heating Engineers*
- *Gas Central Heating Installation*
- *Power Flushing*
- *Servicing & Repairs*
- *Bathroom Specialists*
- *Water Softeners Supplied & Fitted*



177773

For further information or to arrange an estimate
Tel: 01234 219753 or call John 07976 828311 or Tom 07792 934224
Sineway Services Ltd, 11 Risborough Road, Bedford MK41 9QS
Email: info@sinewayservices.co.uk Web: www.sinewayservices.co.uk



Come and join us for a walk. We walk every Saturday afternoon approximately 6 miles and Saturdays twice a month in morning for approximately 12 miles.

Summer Walks Please note change of start time for afternoon walks – Summer start 13:30. Or try our “Ramble” on first Saturday morning each month – slightly shorter, slower pace.

THE BEDFORDSHIRE FESTIVAL OF AUTUMN WALKS
6th – 14th September Full details are available on www.bedswalkfest.co.uk or the dedicated Facebook page Bedfordshire Festival of Autumn Walks.

REGULAR SEPTEMBER WALKS

6th AM “Ramble”, Riseley | 4.5 miles or **PM** Riseley | 6.5 miles

13th AM Woburn | 14 miles or **PM** Cranfield | 6 miles

20th AM Husbourn Crawley | 6 miles

27th AM Ampthill | 11 miles or **PM** Henlow | 6.5 miles

For our latest walks program visit www.ramblers.org.uk/go-walking/ramblers-groups/north-bedfordshire-group. Please bring a drink, snack or lunch as we always have a break. For more information on our walks telephone: **Margaret Sawyer** | 07780 933729 Facebook: **North Beds Ramblers** www.ramblers.org.uk/north-bedfordshire

Police Update

Your Rural Community Police Officers from Riseley would like to inform you that there has been a recent increase in thefts from vehicles in the local area. Please remain vigilant and take the following precautions to help protect your property:

VEHICLE SECURITY TIPS

1. Always lock your vehicle.
2. Close all windows and sunroofs.
3. Remove valuables
4. Hide charging cables.
5. Use a steering wheel lock.
6. Install a car alarm or immobiliser.
7. Park in well-lit areas.
8. Use driveway security posts or bollards.

DRIVEWAY & ROADSIDE SECURITY

1. Install motion-activated lights.
2. Use CCTV or smart doorbell cameras.
3. Keep hedges and fences low.
4. Consider a driveway alarm.

TECH & TRACKING

1. Use a GPS tracking devices.
2. Smartphone apps with allow remote locking.
3. Dashcams with parking mode.

GOOD HABITS

1. Double-check your vehicle is secure before bed.
 2. Report suspicious activity.
 3. Use UV pens or marking kits tools on valuables.
- Your awareness and cooperation can make a big difference in keeping your community safe.

PC 5729 Napoli Riseley, Bedfordshire

BURR'S GARAGE LTD.

ESTABLISHED 1974

**Service, repairs
and diagnostics**

30 IVY LANE, WILSTEAD MK45 3DN
01234 741167 / 07777 656767

NAO Catteries

07411 136691

naoservices111@gmail.com

- Fully Licensed & Approved
- Heated Pens with Individual Outside Runs
- Mon-Fri 9-11 to 6-7 Sat 9-11
- Collection & Delivery Service Available

Bramble Lodge, 29 Oakley Road,
Clapham, Bedford MK41 6AN

www.naocatteryservices.co.uk

INDRAN POOPALAPILLAI MAS SUPERMARKET & POST OFFICE

33 Cotton End Road | Wilstead MK45 3BX

**All services now available
at the Post Office counter,
including:**

POST
OFFICE

- Free cash withdrawals (all banks)
- Bank balance, deposit cash/cheques
- Top-ups for electricity, gas, iTunes, mobile phones
- Money Grams and commission-free foreign currency exchange
- National Express tickets
- And many other Post Office services!

Our local village store stocks fresh groceries and bakery products daily. We also offer a wide range of services, including newspapers, magazines, National Lottery, photocopying, and much more!

STORE OPENING HOURS
Monday to Saturday 7:00am-7:00pm
Sunday 7:30am-6:00pm

01234 740210

Warmer Roof Garden Room Builds

Contact: Malcolm

Tel: 07966 380968

Email: malcolm@cladwinds.com

Applied discounts for the local area

www.cladwinds.com



Reflections

PROFESSIONAL CLEANING SERVICE

Domestic & Commercial Window Cleaning
 Soffit & Facias, Gutters, Conservatory Roofs
 Pressure Washing & Soft Washing
 Patio, Driveway and Decking Cleaned

Tel/Fax: 01234 743026 Mobile: 07738 983320

JB DOMESTICS

REPAIRS TO..
 WASHING MACHINES
 DISHWASHERS
 ELECTRIC OVENS
 TUMBLE DRYERS



NO CALL OUT CHARGE!

Large range of spares carried in stock
 PROMPT RELIABLE SERVICE 30yrs. EXP

TEL: 01234 840049

MOB: 07778 891490

Please note:

No part of this newsletter may be reproduced, by any means, without the prior permission of a member of the editorial team.

This newsletter is published by Wilstead Neighbourhood Watch, part of Bedford & District NW Association, in close co-operation with Bedfordshire Police.

The Wilstead Village Website can be found at
www.wilsteadvillage.org.uk



**palliative,
 neurological
 and bereavement
 support**

Step into a starlit evening to celebrate a loved one at Sue Ryder Starlight Hike

Bedford | Saturday 11th October

Get together with friends and family and take part in a 5k or 10k walk for someone special while raising vital funds to help Sue Ryder continue providing expert care and support to those facing grief and loss.

Sponsored by Concept Event Solutions and taking place at the beautiful Everard Meadow, the walk offers live entertainment, an electrifying glow stick fitness dance session, and entertainment along the route. Hundreds of walkers will have the chance to come together to celebrate the lives of loved ones.

At the finish line, participants will receive a well-earned medal, knowing their efforts have helped ensure that no one faces death or grief alone. Every pound raised will support Sue Ryder's specialist care, helping people navigate life's most difficult moments.

Sign up today at sueryder.org/StarlightBedford or contact the fundraising team at stjohns.events@sueryder.org or call 01767 642412. Standard tickets start from £20 per adult, which includes a medal and tee shirt.

Those unable to take part in the walk can still be involved - volunteers are needed to support Starlight Hike and help make the evening truly special. Get in touch with the fundraising team to find out more.



DEAKIN & PECK FLOORING

Family run business with over 20 years experience



FREE QUOTE

Let our passion for flooring help guide you in transforming your home or work place.

Lee 07925 597605 / Chris 07474 714557

Covering Northampton, Milton Keynes, Bedford and the surrounding areas.



Wilstead Women's Institute

Our August meeting brought Very from the Police Cyber-crime unit to give us advice on how to be safe on our phones computers and tablets. A very interesting talk and our members had lots of questions to ask.

Our next meeting will be on **Thursday 4th September** where Lisa Cranston will have talked about the work of the National Animal Welfare Trust.

Everyone welcome, meetings start at 7.30pm in the village hall if you would like further details please contact me on the numbers below.

Karen Cook | President
01234 403936 | karencook3@btinternet.com

RECENT CRIME RECORDED FOR WILSTEAD

SHOPLIFTING

19th July

Cotton End Road

ASSAULT

22nd July

Luton Road

ASSAULT

22nd July

Luton Road

STALKING

22nd July

Luton Road

ASSAULT

23rd July

Bedford Road

ASSAULT

26th July

Hooked Lane

VEHICLE CRIME

3rd August

Church Farm Avenue

VEHICLE CRIME

4th August

Pollards Close

VEHICLE CRIME

4th August

Pollards Close

SEXUAL OFFENCE

4th August

Wilstead

ASSAULT

7th August

Armstrong Close

VIOLENCE

12th August

Longmeadow Drive

Newsletter DEADLINE

For any copy, new advertisements or changes to existing advertisements

Friday 19th September

The next newsletter will be published on **Friday 3rd October**.

Please send items and articles for inclusion in the Wilstead Newsletter to our dedicated email address:

wilstead.newsletter@gmail.com

Please note that requests for NEW ADVERTS and Advert Changes should now be sent to **Maxine Hendry**, as should Payments.

Telephone Number List:

To cut out and keep by your telephone.

EMERGENCY	999
CRIME IN PROGRESS	999
Non Emergency Police	101
Police Headquarters	01234 841212
PC Vito Napoli	101
Crime Stoppers	0800 555 111
Abandoned Vehicles	01234 718359
Borough Councillor, Graeme Coombes	07815 302318
Borough Councillor, Marc Frost	07825 304080
Neighbourhood Watch Central Office	01234 842043
Wilstead Good Neighbours	07807 408928

Who's Who:

Neighbourhood Watch, Wilstead.

Advertisements & Accounts

MAXINE HENDRY, 17 Hampton Close, Wilstead MK45 3DA

✉ wilstead.newsletter@gmail.com ☎ 407998

Editor

Crime Prevention News/Information

Local Village News & Information

JACKIE LLOYD, 41A Luton Road, Wilstead MK45 3ER

✉ wilstead.newsletter@gmail.com ☎ 742757

Artwork by SIMONE MILLIGAN ✉ wilstead.newsletter@gmail.com

Printed by WHITE HART PRESS, 58A York Street, Bedford

IMPORTANT NOTICE

*The Wilstead Newsletter
volunteer team do not accept
any responsibility for adverts
or items placed in this publication.*

CARPETS : RUGS : SOFAS : MATTRESSES : END OF TENANCY



CARPETS REFRESHED

••• PROFESSIONAL CARPET CLEANING •••

Please ring Daren on **07925 614291**
carpetsrefreshed.co.uk

MNS

Tel: 01234 404096
Mobile: 07876528260

Internal work

Alterations & General Building
Plastering (Artex Removal)
Bathroom & Kitchens
Refurbishment
Tiling
Painting & Decorating

External Work

Fascia Soffit & Guttering
Garage Doors (Remote Control)
Patios
Fencing
Block Paving
Decking

MNS Property Maintenance

Pollards Close, Wilstead, Bedford MK45 3HA



BESPOKE BUILDERS LTD

*providing
Quality Building Work
in Wilstead, Wixams
and surrounding areas*

*From Small Extensions
to New Builds
Garage Conversions
and Loft Conversions*

Telephone: 01234 404706

Mobile: Richard 07710 446881

Jess 07794 480440

www.rwbuilders.co.uk
contact@rwbuilders.co.uk

Sad Endings or New Beginnings?

September is a curious month that often ends summer with a cool few days and then we often have a glorious warm few weeks with amazing autumn colours. So should we be sad that the long warm days are over for this year or celebrate what might be coming?

Autumn sees the Wilstead Garden Club back in the village hall for their meetings. Unfortunately our last summer outing had to be postponed because of the vandalism at Clophill Lakes. We plan to find out more about the Greensand Trust and their work and make a visit to the Lakes next year.

On **Tuesday 16th September** we will be welcoming Mike Stewart who will be talking about lawncare in our changing climate and topiary. From previous talks we remember him pruning bushes for hours with small scissors at some of his professional gardens. Hopefully we won't have to be so careful to achieve results in our gardens.

October will be our Quiz Night when Mary promises easy questions, it's the answers we have trouble with. November is a crafty session, actual activity to be revealed nearer the time, and December is our Christmas meal.

We may be sad that our flowers and vegetables that have braved the challenging conditions of summer are now spent but now we can look forward to new beginnings of meetings in the hall and planning for a glorious autumn and spring.

Wilstead Garden Club meets on the 3rd Tuesday each month, except December, at 2.30 pm in the Village Hall. Entry £3 with an optional raffle at £1 per ticket.

We look forward to seeing you.

Wilstead Garden Club Committee
wilsteadgardenclub@hotmail.com

Please mention the



**Wilstead
NEWSLETTER**
including Parish Council News
PUBLISHED BY WILSTEAD NEIGHBOURHOOD WATCH, PART OF BEDFORD & DISTRICT NW ASSOCIATION

when replying to advertisers